

2022 NPCR ARIZONA SUCCESS STORY

Arizona Cancer Registry; Georgia Yee, CTR

Creating Templates for Data Publications and Common Queries

National Program of Cancer Registries SUCCESS STORY

SUMMARY

The Arizona Cancer Registry (ACR) strives to make data available to the public and interested parties. The ACR created standard templates that include more data visualizations that have been used for several years for the annual report and site-specific infographics on screening-amenable cancers. In addition, the registry expanded the internal data query system by adding more query-able cancer sites of interest to assist with responding to data requests. These enhancements are being migrated to a new Tableau dashboard.

CHALLENGE

The NPCR Program Standards include production of electronic reports on age-adjusted incidence and mortality rates, and include other factors like stage at diagnosis, sex, race, ethnicity, and geographic area and reports that focus on screening-amenable cancers. The new 5-year program standards expand on cancer surveillance publications. The ACR had a public data query system on our website where our data were published following data submission. Our public data query allowed the public to query cancer rates and population estimates for Arizona. Queries could be done on 32 cancer sites. Despite the availability of the public data query system the ACR continues to receive data requests. The ACR also publishes an annual report and fact sheets each year that expand on data items related to incidence and mortality. These publications are generally posted much later. A more streamlined efficient manner to publish reports was needed. The ACR also had an interest in expanding the cancer site queries to add common frequent requests of interest but also knew that we had limitations with our public data query.

SOLUTION

Creating templates for the annual report publication and fact sheets was an easy solution to consider. Instead of the traditional combination of text and graphs, the ACR transitioned to an infographic-style report with more data visualizations and minimal text. In addition, the fact sheets also shifted to an infographic that allowed us to include more graphics on the incidence and mortality of cancer.

During this time the ACR also removed its public data query and is currently transitioning to a new Tableau dashboard that is expected to be available to the public by Spring 2023. Our internal data query site is still available, but only for internal use. Since our internal data query site allowed for more flexibility, the ACR expanded the data query cancer site options so that we could easily continue to respond to data requests. The latest site options include breast in situ, benign brain/CNS, and HPV related cancers. We expect these to be options when the new Tableau dashboard is available.

RESULTS

The ACR has used the same template for the annual report and site-specific infographics for the past several years. It has been a more efficient, streamlined approach. The data needs for these reports are standard; we use the same criteria with minimal tweaking of codes. We have also incorporated the new site options into our internal data query and can respond to data requests in a timelier manner. All these changes will be incorporated into the new Tableau dashboard.

SUSTAINING SUCCESS

The use of templates for publications is sustainable and a more efficient manner to publish data each year. The registry will revisit a new template periodically, but the intent is to continue this format, and that is to develop templates that could be used for several years.

REGISTRY CONTACT INFORMATION

602-542-7320
Arizona Cancer Registry Website

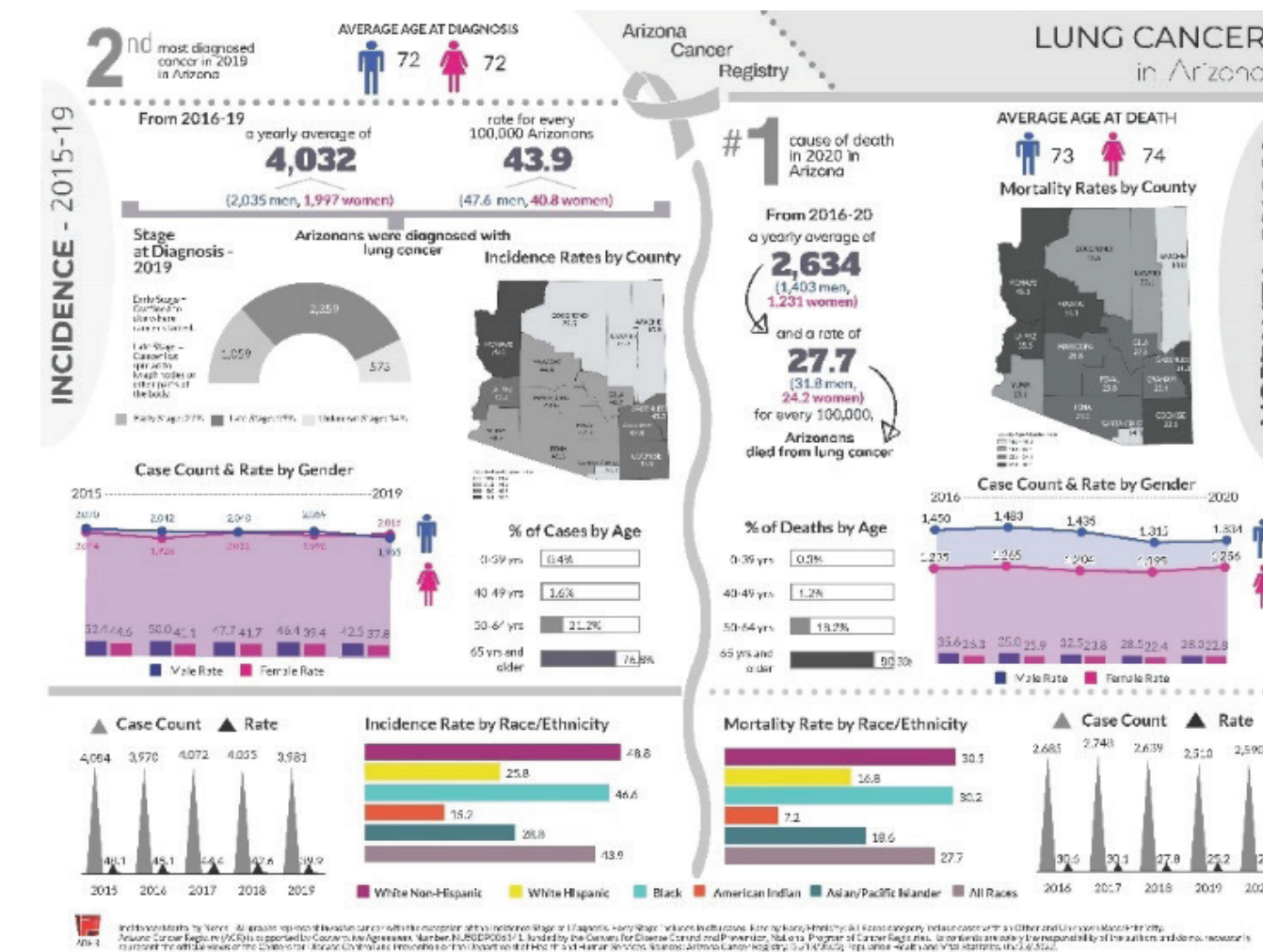


EXHIBIT 1: EXAMPLE OF LUNG INFOGRAPHIC



U.S. Department of
Health and Human Services
Centers for Disease
Control and Prevention